

THE STYLISH LIVING MAGAZINE

embark

HOME & DESIGN

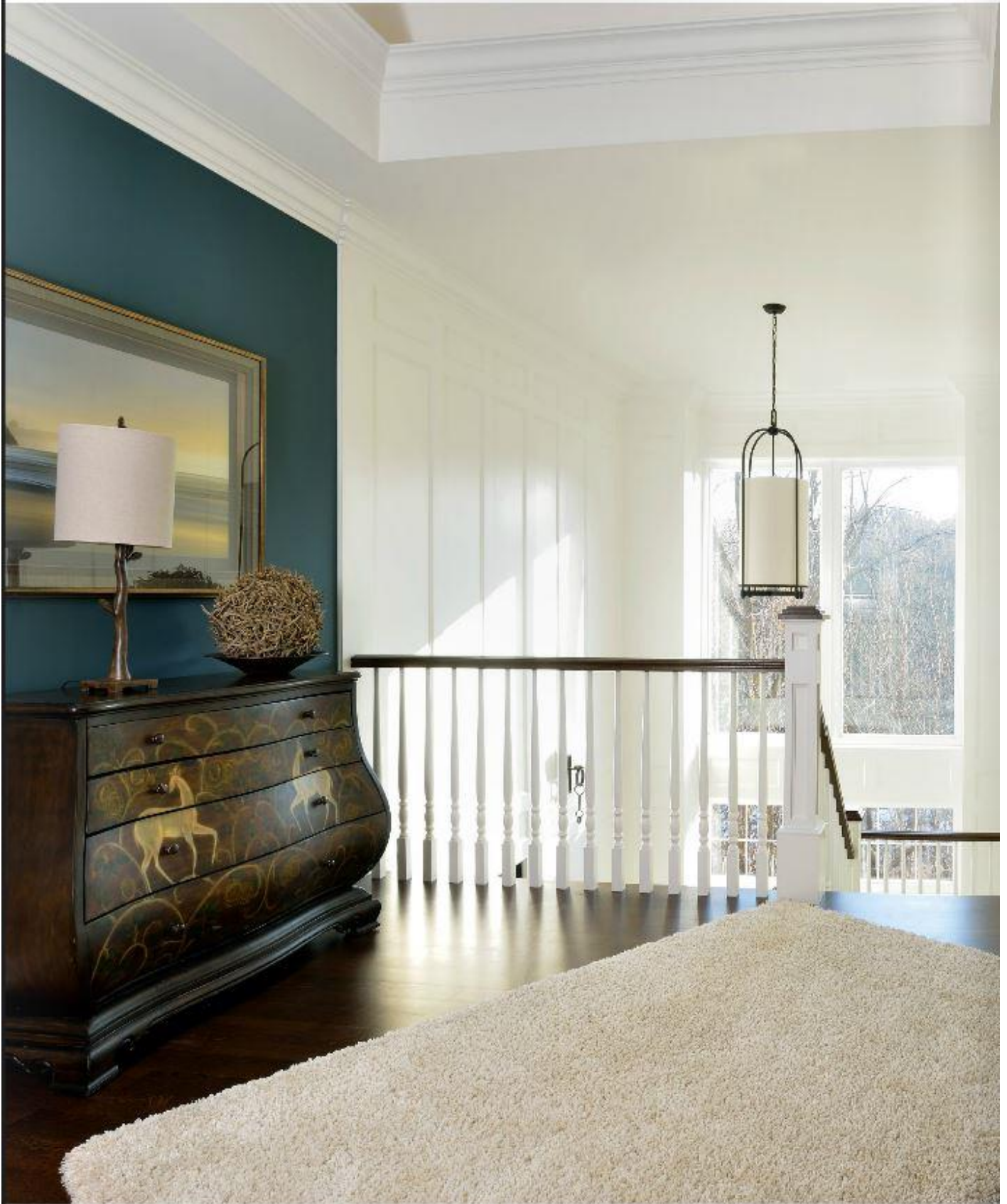
Click to read

WE HAVE THE INSIDE LOOK WITH

ALISON VICTORIA

WE SPLASH THE
HOTTEST PAINT
COLORS ON
YOUR WALLS

CASA & COMPANY
SHARES HOW TO
ORGANIZE YOUR
OFFICE SPACE



AVOIDING THE TUNNEL EFFECT

BY SANDRA NASH | WWW.MAKING-A-SCENE.COM

Whether your hallway is in the front entry or at the back of the house leading to the garage, it is the path that must be travelled to reach the living spaces. Hallways are often overlooked when it's time to decorate because they are perceived as a utilitarian space. The hallway is a highly travelled part of your home that should not be ignored. These spaces are just waiting to be given the same flare as your other rooms.

Undoubtedly, hallways are one of the most challenging rooms to decorate because they are more narrow than the average room, with vast amounts of uninterrupted space. Often they lack natural light, architectural interest, and character. The key is to highlight and accentuate the features while minimizing deficiencies.

Since hallways connect all the dots, that is the rooms to one another, it is important to start by setting the tone through the use of colour. A colour that compliments the rooms that it is leading into. This way the hallway "visually borrows" décor from the adjacent spaces, fooling the eye, and creating flow and continuity.



SANDRA NASH is a Toronto-based, award winning designer with over 15 years of experience and the principal of Making-A-Scene. She designs residential and commercial projects tailored to the individual styles and needs of clients throughout the greater Toronto area.



Be especially mindful of traffic patterns, particularly if the hallway leads to an awkward intersection of adjoining rooms, stairs or an entryway. Opt for furnishings that 'hug' the wall when valuable walking space is restricted. These high traffic areas are ideal for panelled millwork painted white, contrasted with a deep bold colour, especially when the space is flooded with natural light.

When possible, create a gallery full of "memory points" and "conversational nooks" that resonate with you. For example, display favourite family or travel photos. Keep them simple by either using a themed collection, or similar frames. Utilizing vertical space with a collage of pictures is a sure way to fix the long, dark "tunnel effect" corridor.





Add light by hanging a nice chandelier or two, adding a pair of tall lamps on a console, and then doubling those initiatives with the use of a mirror. Whether a large floor mirror or a collage of different shaped mirrors, they actually reflect the light and give the illusion of more space. This is an excellent way to add sophisticated elegance without crowding the walking area.



So reclaim your undervalued real estate, rescue your hallway and make a statement.

TIPS:

A carpet runner acoustically adds warmth while emphasizing the halls length.

Pair a console with a couple of chairs on either side to fill an oversized hallway.

Fill floor vases with natural elements to add visual height and interest.

Select durable, non-slippery flooring that can handle heavy traffic.